

# Terminal releasing documentation

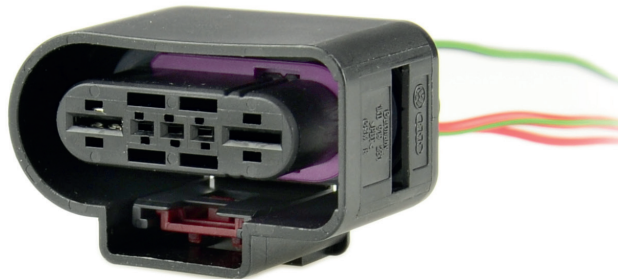
## WEB-CON-000033

Supplier —

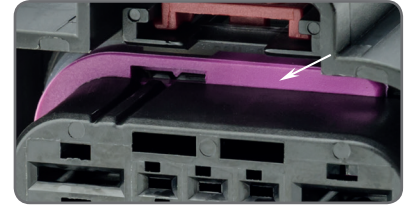
Articleno. 1K0 919 231

Replaced —

### Secondary



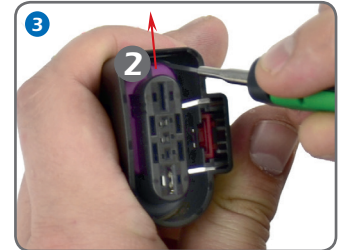
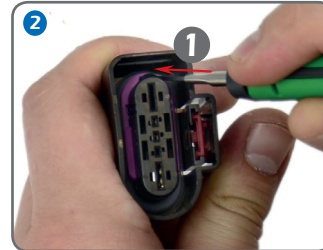
#### Detail Secondary locking



Secondary lock: 1  
Primary lock: 2

Colour: black  
Application: —

Tool WEB-ENT-30-0002-98



In this documentation, you will see application examples. These examples may differ in colour and number of pins. TKR cannot provide repair manuals.  
In dieser Dokumentation werden Anwendungsbeispiele gezeigt. Diese Beispiele können sich in Farbe und Poligkeit unterscheiden. TKR kann keine Reparaturanleitung vorgeben.

Pins 5

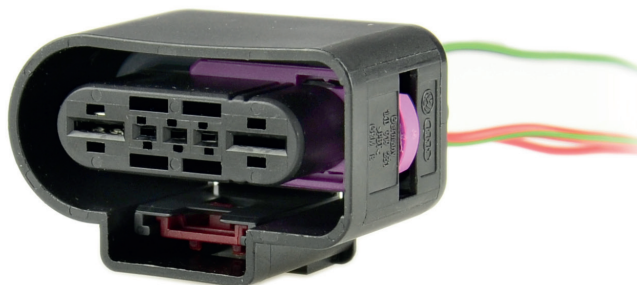
Type

female

Mating conn. —

Seal yes

### Primary I



Repair wire WEB-REP-000...

...037, ...117, ...188

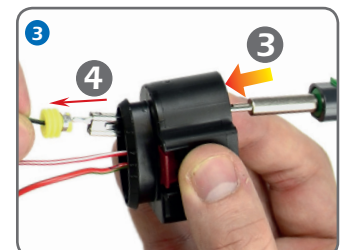
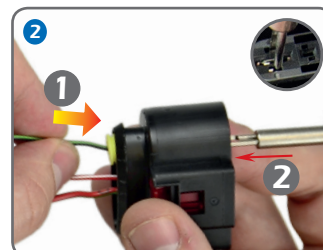
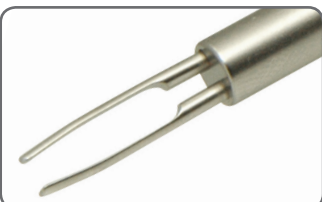


Measuring lead WEB-MES-000...

...091, ...099



Tool WEB-ENT-12-0030-99



# Terminal releasing documentation

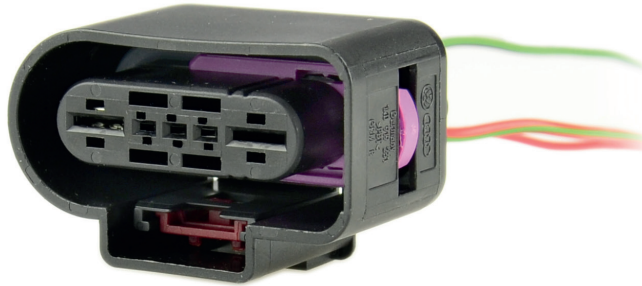
## WEB-CON-000033

Supplier —

Articleno. 1K0 919 231

Replaced —

### Primary II



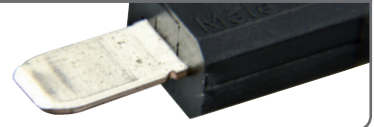
Repair wire **WEB-REP-000...**

...037, ...117, ...188

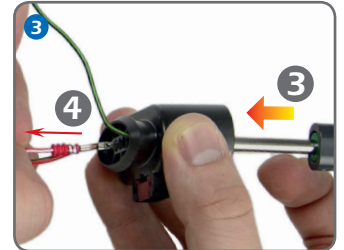
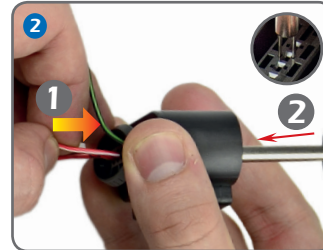
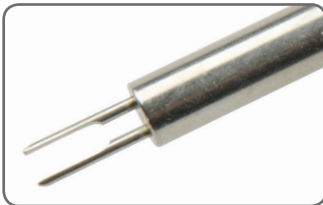


Measuring lead **WEB-MES-000...**

...091, ...099



Tool **WEB-ENT-12-0010-99**



In this documentation, you will see application examples. These examples may differ in colour and number of pins. TKR cannot provide repair manuals.  
In dieser Dokumentation werden Anwendungsbeispiele gezeigt. Diese Beispiele können sich in Farbe und Poligkeit unterscheiden. TKR kann keine Reparaturanleitung vorgeben.

This information is confidential and is disclosed to you on condition that no further disclosure is made by you to other than TKR personnel without written authorization from TKR GmbH, Gevelsberg, Germany.